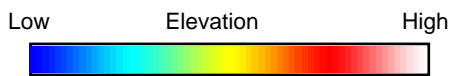
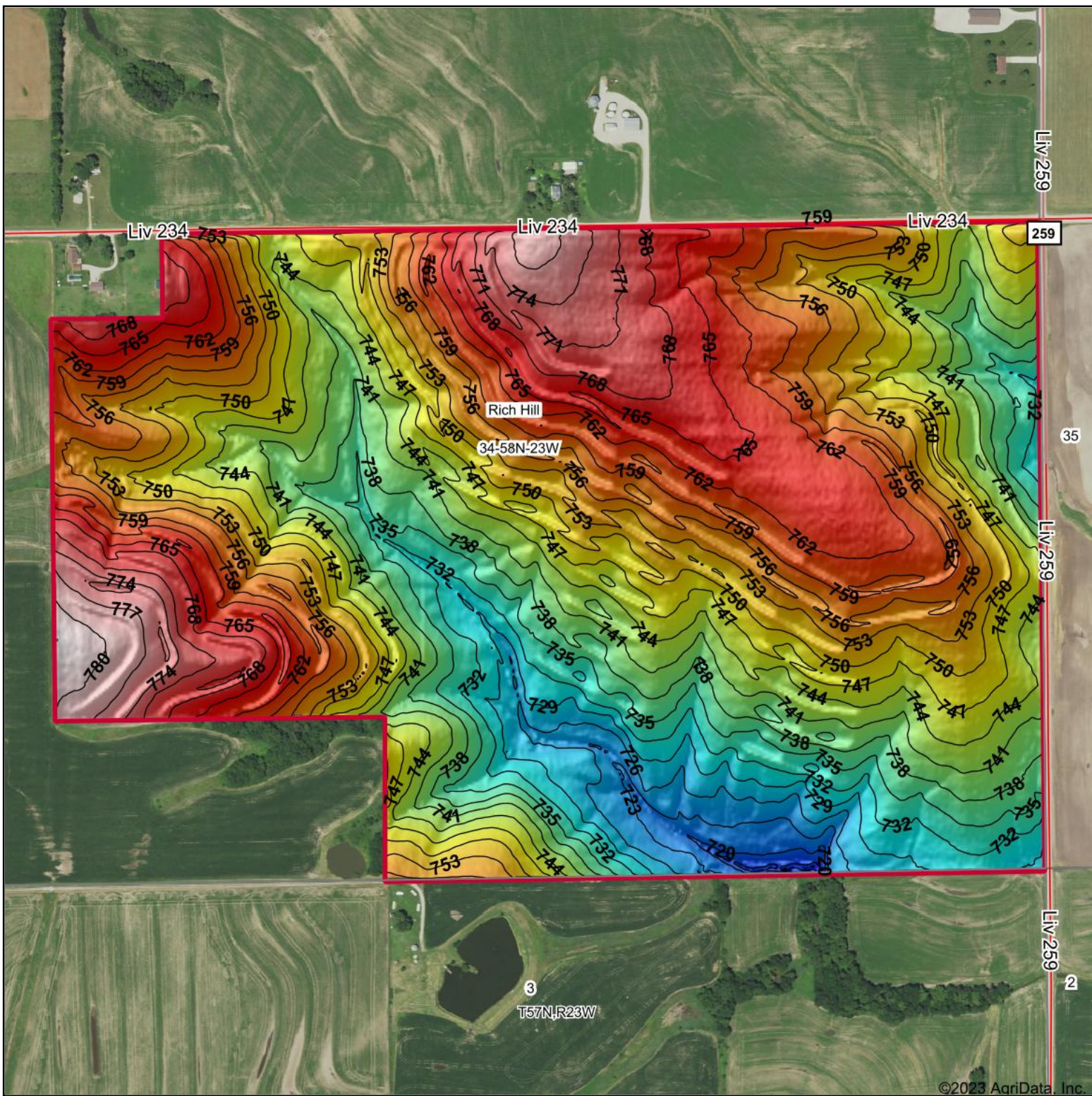
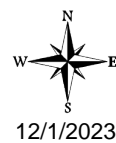
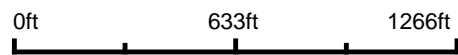


Topography Hillshade - Tract 1



Source: USGS 3 meter dem
 Interval(ft): 3
 Min: 713.2
 Max: 782.7
 Range: 69.5
 Average: 750.0
 Standard Deviation: 13.48 ft



34-58N-23W
Livingston County
Missouri

Boundary Center: 39° 47' 41.24, -93° 28' 13.98

TETER
 AUCTION COMPANY

Maps Provided By:



© AgriData, Inc. 2023

www.AgriDataInc.com

©2023 AgriData, Inc.