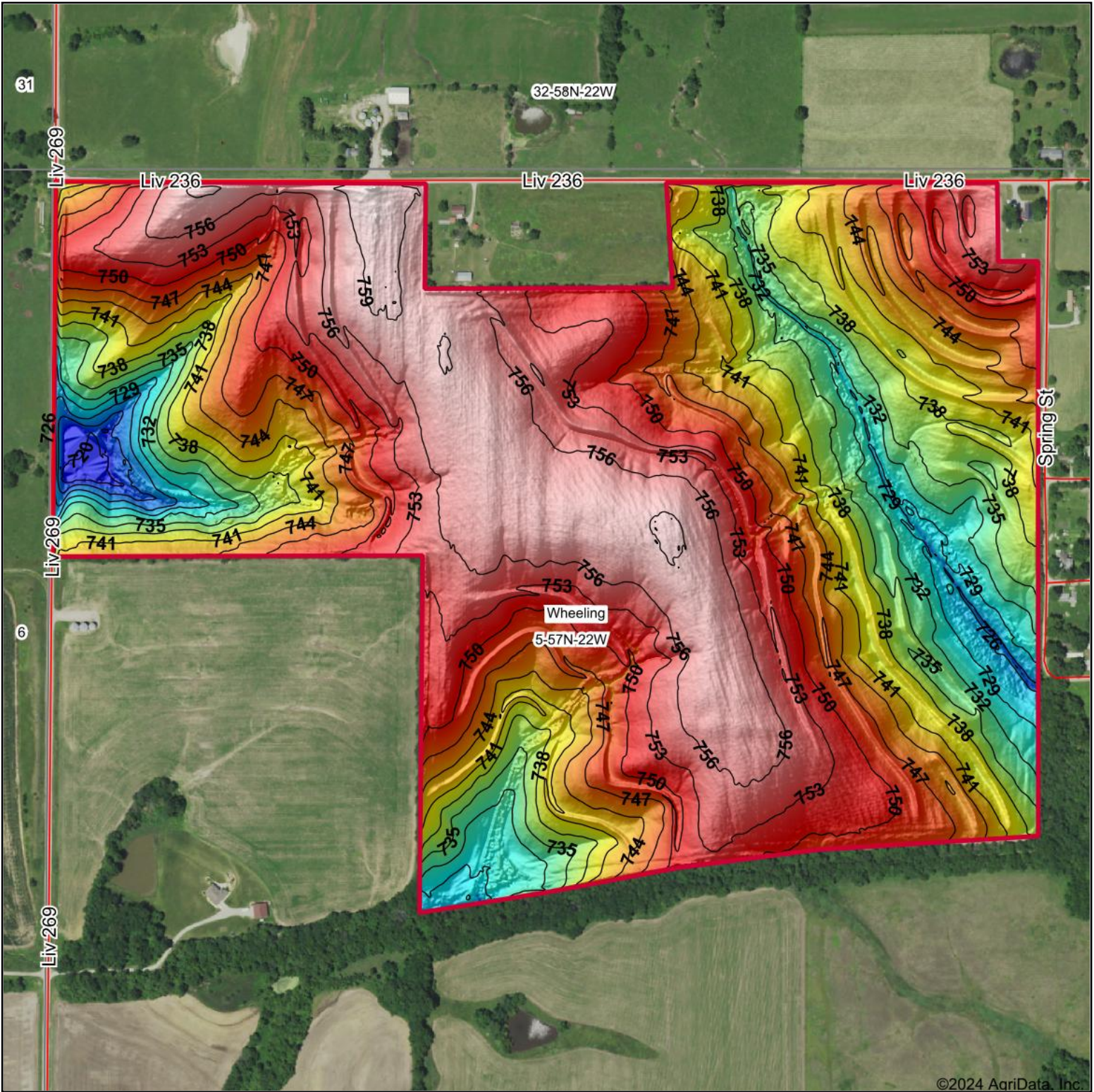
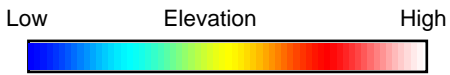


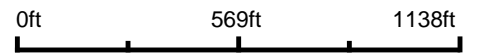
Topography Hillshade



©2024 AgriData, Inc.



Source: USGS 3 meter dem



Interval(ft): 3

Min: 718.8

Max: 761.3

Range: 42.5

Average: 745.9

Standard Deviation: 9.28 ft



10/12/2024

5-57N-22W
Livingston County
Missouri

Boundary Center: 39° 47' 17.9, -93° 23' 46.74

TETER
 AUCTION COMPANY

Maps Provided By:

surety
 CUSTOMIZED ONLINE MAPPING

© AgriData, Inc. 2023

www.AgriDataInc.com